

ED-Click housing waterproof test

Test report

Test Setup 1 meter below water:

Test setup:

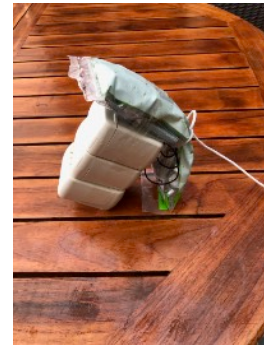
- PVC pipe
 - 125 mm diameter
 - 1100 mm length
- Iron weight 2kg
- Rope
- Tape
- 3 ED-Click housings with new B-ring and revision 1 click housing

(revision 1 housing: extra room in lid for B-ring and a better fit for the bottom click mount)



Test procedure:

1. Pipe is filled with water @ 15 deg. Celsius
2. All enclosures are filled with absorbent paper
3. All boxes are taped to the weight with lid untouched
4. Enclosures with weight are lowered into the pipe to the bottom, so with 1 meter water on top



Test result after 35 min:

All 3 enclosures are completely dry inside
See photo ->

Conclusion: PASSED water test (IP67)



Enclosures are closed again and lowered into the pipe.



Test result after 72 hours:

Enclosures are completely dry inside, see photo ->

Conclusion: PASSED long time water immersion



ED-Click housing waterproof test

Test report

Test with Kärcher high pressure hose k2.390:

specification: 5,5 l/min, max 11 MPa

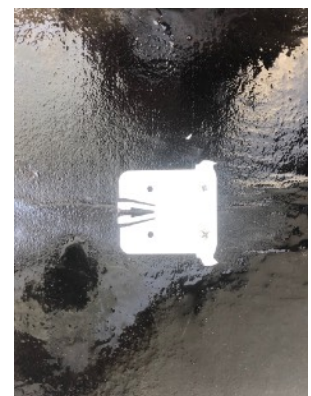
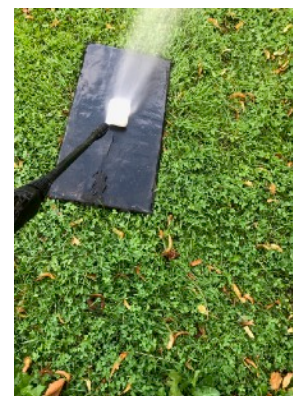
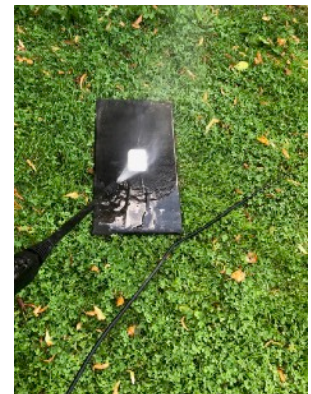
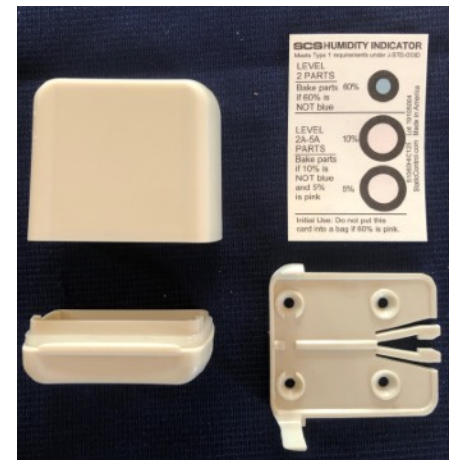
Test setup:

- ED-Click housing with new B-ring.
- Mounted on a waterproof surface with 2 mounting screws.
- Inside the housing a moisture indicator is placed.

Test procedure:

With high pressure hose at 10cm distance from the housing.
Water temperature is about 10 degrees:

- spray at ground level (0 degrees) all around
- spray at 30 degrees all around
- spray at 60 degrees all around
- spray from top, 90 degrees all around



Test result after high pressure hose:

Enclosures is completely dry inside, no moisture indication.

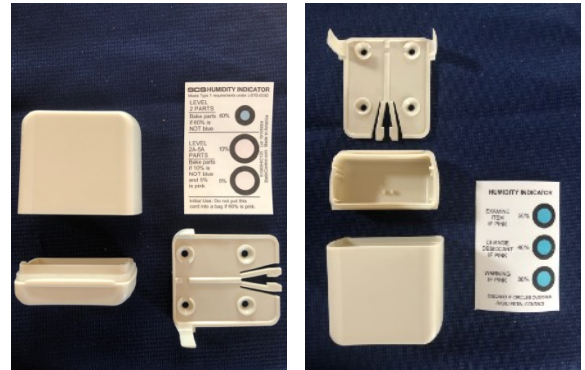
Conclusion: PASSED pressure hose test



Dish washer test:

Test Setup:

- 2 pcs. ED-Click housing with new B-ring
- Inside the housing a moisture indicator is placed.
- Housing is placed inside a dishwasher, top drawer
- Program @70 deg, 2 hours and 20 minutes



Test result after 2u20m in dishwasher:

Enclosures is completely dry inside,
no change on moisture indication.



Conclusion: PASSED dishwasher test

End conclusion:

ED-Click housing is waterproof in tested situations.